

# Apsley House



PLEASE FEEL FREE TO READ, TO SEE WHAT **APSLEY HOUSE** HAS TO OFFER.

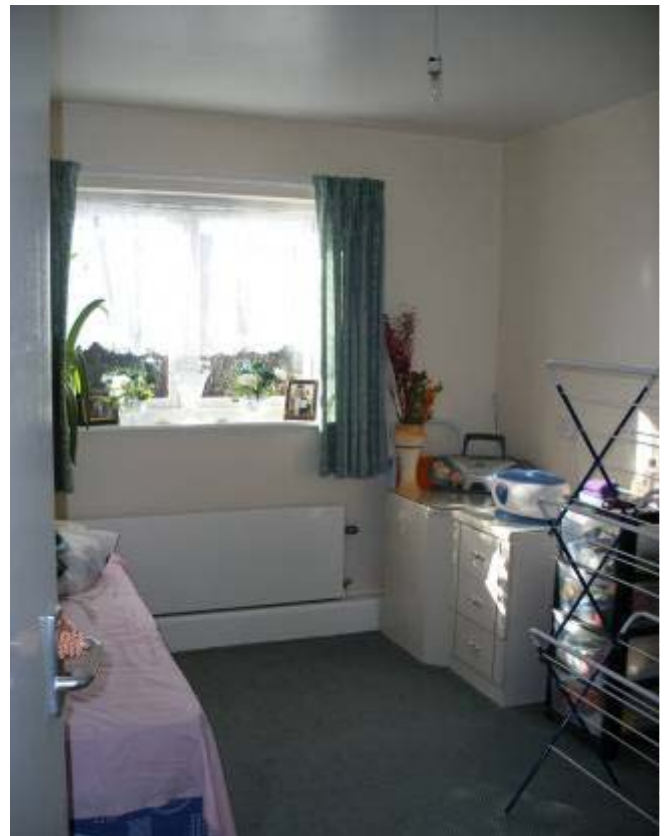


## Apsley House

Wellington Street, Cradley Heath.

*Apsley House is a sheltered housing scheme for the elderly. It consists of 33 self-contained one and two bedroom apartments set in pleasant landscaped gardens with car parking facilities.*

All apartments are unfurnished for single people and couples.





**Kitchens** are fitted, but this excludes a cooker and fridge.

**Carpets** are fitted through the lounge, bedroom(s) and hallway, with non-slip vinyl covering to bathroom and kitchen floors.

All apartments are **centrally heated** and are fitted with an **emergency alarm call system**. The apartments also have a **door entry system**, and a close circuit TV system, to enable tenants to see who is calling at the main door.

### Facilities

- Laundry with washing machines and tumble dryers
- Guest room for short stay visitors
- Emergency call system
- Private, well maintained gardens
- Hair-dressing salon
- Assisted bathroom



## Communal Lounge/Dining Room



Our scheme has a communal lounge/dining room which is used for social and recreational activities, and a small lounge for smaller groups to meet for quieter activities and games.

The Scheme Manager works office hours Monday to Friday.

His/her role is to ensure the building is well managed, to promote independence and to co-ordinate care services for those who need extra support.

There are a team of care assistants who are on duty 24 hours a day to provide care services to those who have been assessed and need their support.

## The Parent Company

Apsley House is part of Black Country Housing Group, which is a community based housing association covering Sandwell, Dudley and Wolverhampton. We have over 30 years experience providing quality homes and other services for families, couples, single people, older persons and people with special needs. We are actively involved in urban renewal, economic and social regeneration and a number of environmental and sustainability projects.

More information about Black Country Housing Group is available at the website, [www.bcha.co.uk](http://www.bcha.co.uk).

### Other Sheltered Housing Schemes

- Elizabeth House, Lye Stourbridge
- Doveton House, Oldswinford, Stourbridge
- Braeburn House, Plane Tree Road, Yew Tree, Walsall
- Vantage Point, Blacksmith Way, West Bromwich

Please ask at our Office for information or ring our Head Office on: 0121 561 1969.



Anyone can apply who is over 55 yrs old.

Care is also available by our fully trained and dedicated care assistants.

We also provide care at Elizabeth Prout Gardens and George Simmons House, properties of Servite Houses.

For further information about Apsley House telephone:

01384 413 836

Or email: [apsley-house@btconnect.com](mailto:apsley-house@btconnect.com)

Ask for Teresa Taylor, Manager.